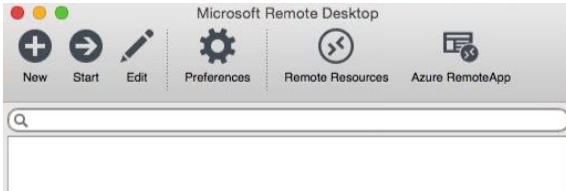


## Connecting to a Cloud Session on a MAC

To connect to your remote session, you will need to get and install the Microsoft Remote Desktop Connect app from the iTunes store (it is free). Get version 10.x or above. The following provides the basics for getting this connection set up.

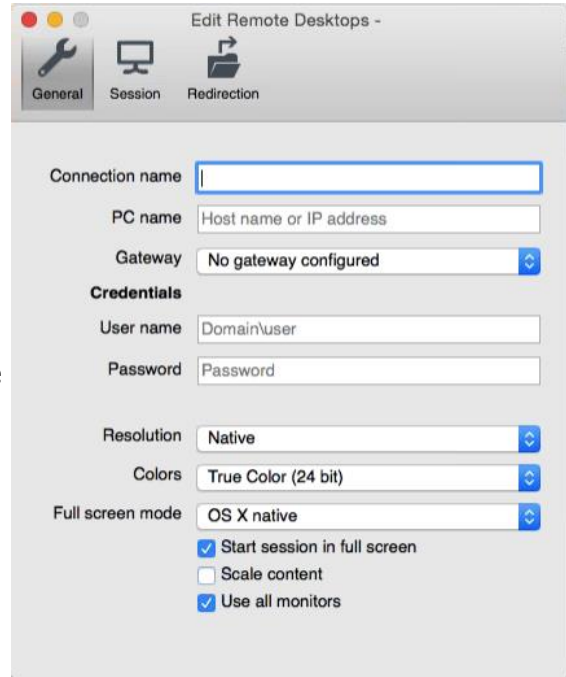
1. Download and install the Microsoft Remote Desktop App from iTunes or App store.
2. Open the Microsoft Remote Desktop App, possibly using Finder to do so to see the window shown on the left below.



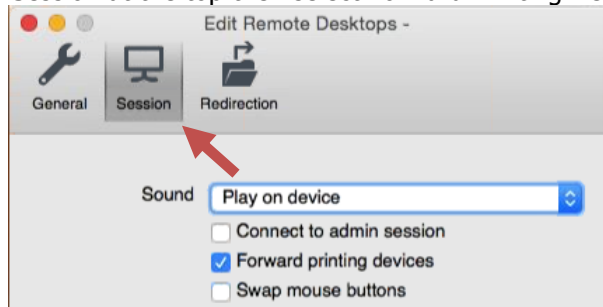
3. Click New to bring up the next screen shown to the right.
4. Type **WinSearch Remote Connection** for the Connection Name or any other description that you want to use.
5. Type **mycloud.winsearch.com** as the PC Name entry.
6. Enter the domain and username in the Username box as follows:

WinSearchASP\XXXJDoe

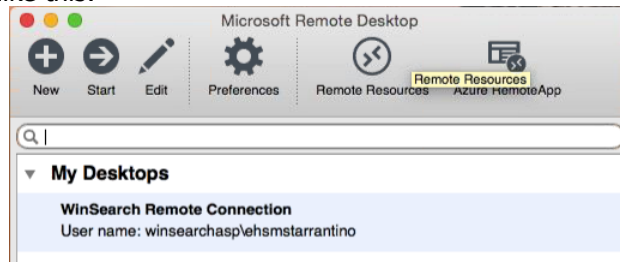
Domain name
\ and not /
3 letters for your company, first name initial, your last name



7. Type your password in the Password box.
8. Click on Session at the top then select Forward Printing Devices



9. Click the red close button in the upper left corner to close this dialog box. Now you set up connection looks like this:



10. When you see any Verify Connection dialog boxes like one of the ones shown below, click Continue.



11. Now you are connected.